



PVS Pump Range

- Vertical Pump
- Available in two sizes – two and three inch
- Hardened chrome iron for an increased wear life
- Can achieve up to 87m head at speeds of 2950rpm

BECKER PVS PUMP RANGE

PVS (Pumpmor Vertical Solids) which is also well known as the Haulage King has a proven track record for reliability. The models come out in two sizes 50mm and a 76mm.

The PVS range originates from the HS range, wet end is constructed from a hardened chrome iron 28% (650BHN) for an increased wear life.

The Hydro solids configured pumps are all designed with the same recessed impeller that gives a higher efficiency than comparable size pumps with the impeller in the flow path.

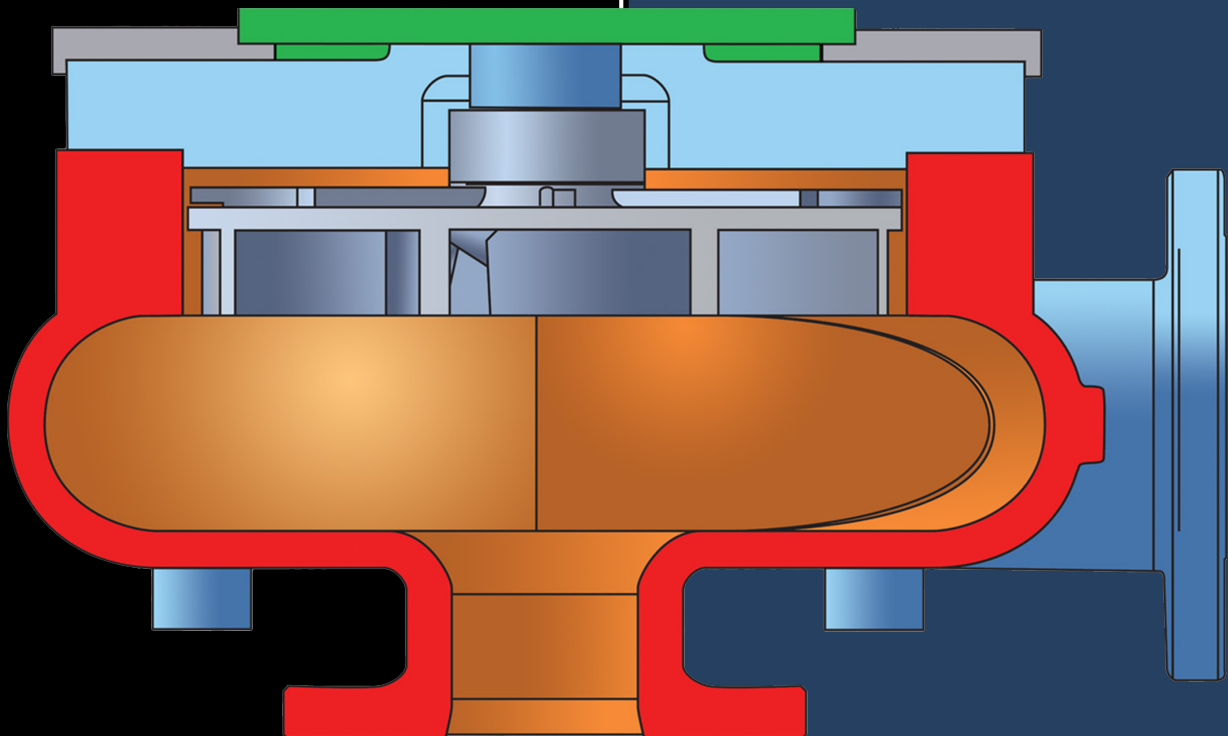
Due to the recessed impeller, large abrasive material can enter the suction inlet and be expelled through the pump discharge without damaging the impeller.

The PVS range can achieve up to 87m head at speeds of 2950Rpm.

The pumps are manufactured in one spindle length of 0.7m and one motor drive. Solids to 76mm and S.G's to 1.5 can be handled.

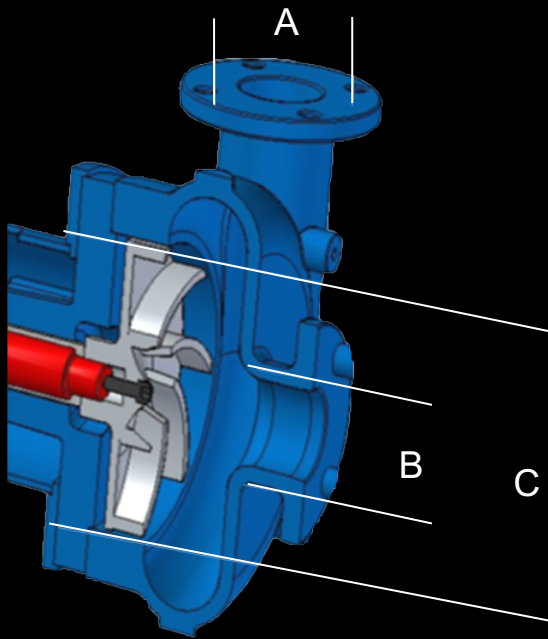
The hydro solid is a vortex pump designed to pump sludge and slurries containing large abrasive solids, trapped air, and fibrous materials. The PVS range is manufactured for both light and heavy duties.

Ideally suited to many difficult mining applications as well as waste treatment, paper and pulp, food processing foundries and steel mills, agriculture and manufacturing industries.

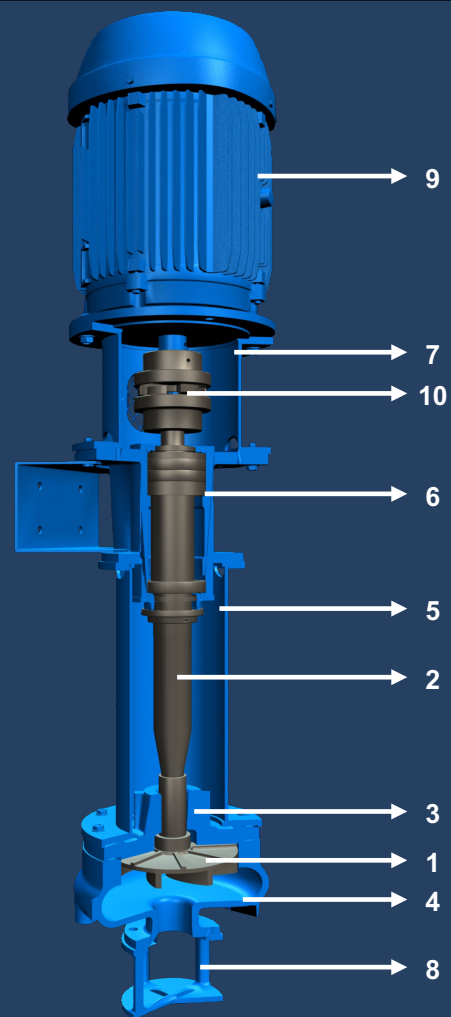


Becker Mining South Africa **minetrans**
4 Clarke Street North
Alrode
Alberton 1449
Tel +27 (0) 11 617 6300
info@za.becker-mining.com
www.za.becker-mining.com

BECKER PVS PUMP RANGE



A DISCHARGE	B SUCTION	C IMPELLER
50mm	50mm	203mm
76mm	76mm	256mm



- 1. Recessed Impeller.** The Impeller will allow any sphere and virtually any solid that enters the suction inlet to pass through the casing discharge.
- 2. Cantilever Shaft.** No submerged bearings.
- 3. Stuffing Box cover.** Minimizes blow back of media around the shaft sleeve without actual sealing contact.
- 4. Casing.** Rugged one piece casing is designed to facilitate the flow of all types of solids and fibrous materials.
- 5. High Strength Pipe Coulumn.** Maintains alignment between the bearing frame and casing.
- 6. Bearing Frame.** Solid cast one piece bearing frame 30mm wall thickness insures precise alignment between bearings.
- 7. Motor Mount.**
- 8. Support Foot.**
- 9. Motor.**
- 10. Pump & Motor Coupling.**

Construction. CR28% (650BHN) material as standard for increased wear life. Other materials include Cast Iron, SS316 & CD4MCU

Becker Mining South Africa **minetrans**

4 Clarke Street North

Alrode

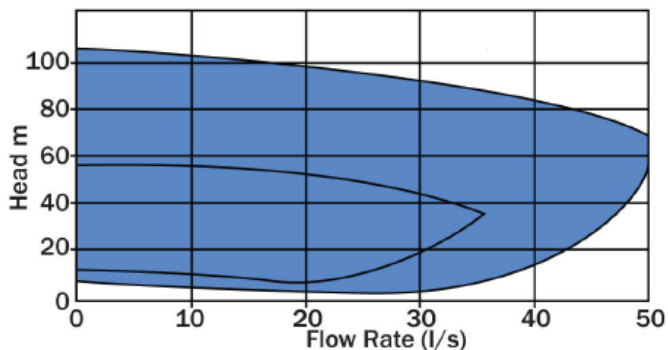
Alberton 1449

Tel +27 (0) 11 617 6300

info@za.becker-mining.com

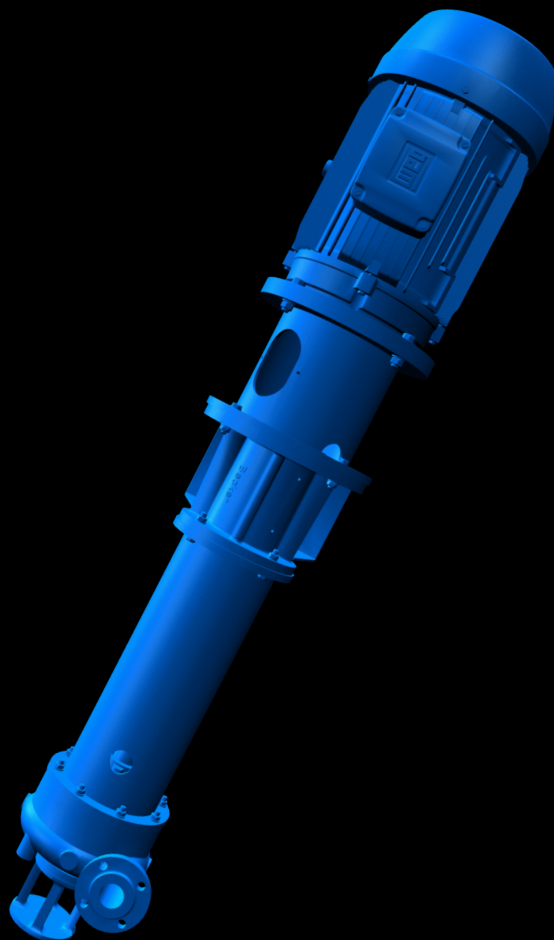
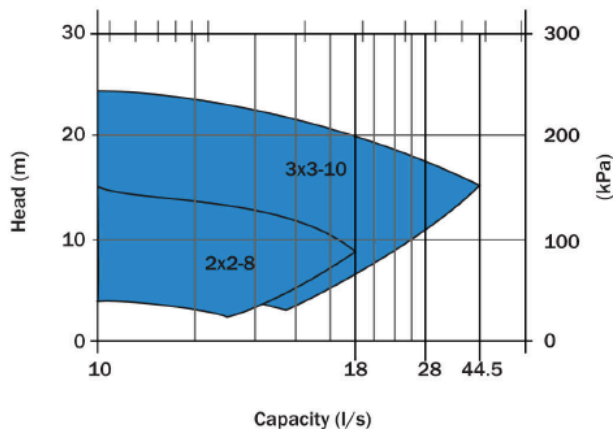
www.za.becker-mining.com

2 POLE



4 POLE

HYDRAULIC COVERAGE



Model	Maximum Head (M)	Maximum Capacity (L/S)	Suction Flange (MM)	Discharge Flange (MM)	Impeller (MM)	Motor (KW)	Motor (RPM)	Pipeline (MM)
PVS 65	12	12	50	50	203	7.5	1450	75
PVS 65	45	12	50	50	203	22	2950	75
PVS 80	20	20	75	75	254	15	1450	100
PVS 80	57	20	75	75	213	37	2950	100
PVS 80	87	20	75	75	254	55	2950	100

Becker Mining South Africa

minetrans

4 Clarke Street North

Alrode

Alberton 1449

Tel +27 (0) 11 617 6300

info@za.becker-mining.com

www.za.becker-mining.com